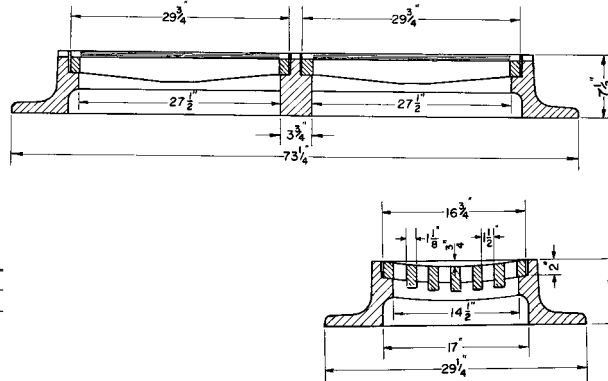


■ Note: When specifying/ordering grates, refer to "Choosing the Proper Inlet Grate" on pages 125-126.
For a complete listing of FREE OPEN AREAS and WEIR PERIMETERS of all NEENAH grates, refer to pages 327-332.

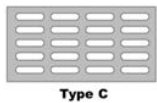
R-3361 Double Valley Gutter Inlet Frame, Grate

Heavy Duty



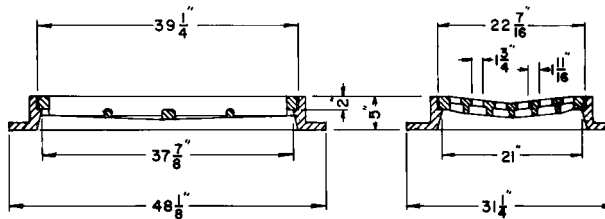
CATALOG NUMBER	GRATE TYPE	SQ. FT. OPEN	WEIR PERIMETER LINEAL FEET
R-3361	K	3.4	12.7
R-3361	C	3.2	12.7

Standard Grate (shown): Type D
Also available with grate Type C.



R-3362 Concave Gutter Inlet Frame, Grate

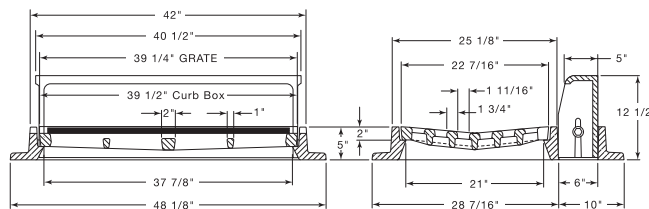
Light Duty



CATALOG NUMBER	GRATE TYPE	SQ. FT. OPEN	WEIR PERIMETER LINEAL FEET
R-3362	C	2.3	10.3

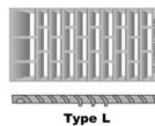
R-3362-1 Concave Gutter Inlet Frame, Grate, Curb Box

Light Duty



CATALOG NUMBER	GRATE TYPE	SQ. FT. OPEN	WEIR PERIMETER LINEAL FEET
R-3362-1	C	2.3	7.0
R-3362-1	L	2.9	7.0

Standard Grate (shown): Type C
Also available with grate Type L.



Supplied By:

**TRENCHDRAIN
SUPPLY**

877-903-7246

www.trenchdrainsupply.com